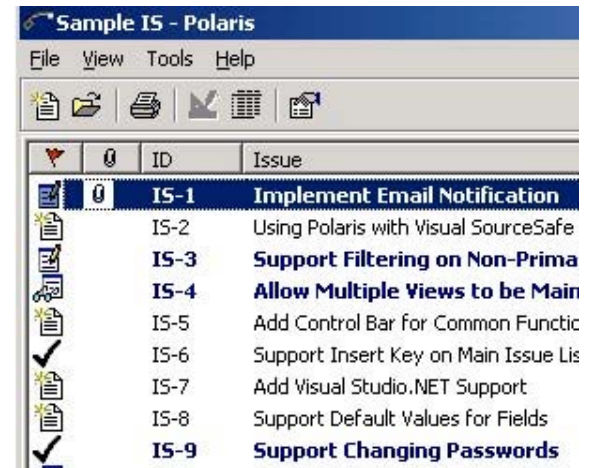


Polaris™ – A Customizable, Windows-Based Workflow and Issue Tracking Solution

Why You Need Polaris? Most organizations know that version control systems are an important part of the software development life cycle. However, according to the *Software Engineering Institute* at Carnegie Mellon University, you need a process in place that goes beyond simply version control:

"The software process for both management and engineering activities is documented, standardized, and integrated into a standard software process for the organization. All projects use an approved, tailored version of the organization's standard software process for developing and maintaining software."

Polaris, an integrated, enterprise solution, can help your organization achieve this goal. Polaris is a customizable Windows-based problem tracking and defect management tool that you can use to improve your software development process. You create the forms that allow you to keep track of the information you need as well as the users, groups, and signature chains that drive the workflow process to correct a defect. Polaris can be used on its own, or as a seamlessly integrated component of Visual Studio.NET.



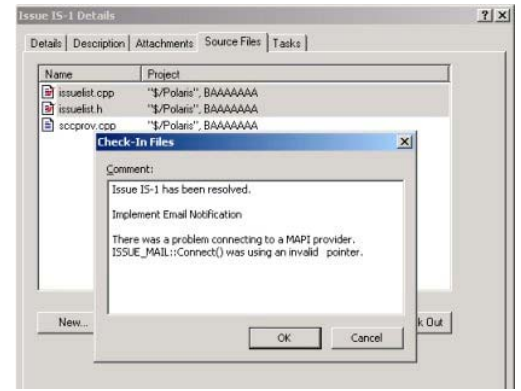
The screenshot shows a Windows application window titled "Sample IS - Polaris". The menu bar includes "File", "View", "Tools", and "Help". Below the menu bar is a toolbar with icons for file operations. The main area displays a table with two columns: "ID" and "Issue". The table contains the following data:

ID	Issue
IS-1	Implement Email Notification
IS-2	Using Polaris with Visual SourceSafe
IS-3	Support Filtering on Non-Prima
IS-4	Allow Multiple Views to be Main
IS-5	Add Control Bar for Common Function
IS-6	Support Insert Key on Main Issue List
IS-7	Add Visual Studio.NET Support
IS-8	Support Default Values for Fields
IS-9	Support Changing Passwords

What Polaris Can Do for You...

- **Issue / Problem Tracking** - Software defects are tracked from the time of submittal until the problem has been corrected and each stage of the process is clearly documented.
- **Process and Workflow Management** - You create the workflow states and the users that can promote an issue from one state to another.
- **Customizable** - In addition to building your own forms, you can specify the choices that will appear in a field, as well as an icon to represent each field.
- **Visual Studio.NET Addin** - Polaris is tightly integrated within Visual Studio.NET so that developers do not have to leave the environment in which they work to participate in the workflow process. This promotes acceptance of the process.
- **Links to your version control provider** - Attach issues to files under version control so that you can trace how a problem was solved. Files can be checked in and checked out from within Polaris. Any provider, such as Razor®, Visible Systems UNIX-based, enterprise software configuration management solution, that supports the Microsoft SCC Interface can be used.
- **Concurrent multi-user access**
- **Customized Issue Definitions** - Organize groups of related problems, defects, issues, or any other type of information by creating forms using all the available Windows controls. Use Visual Studio, Visual Studio.NET, or your favorite editor to define up to 25 pages of information that you wish to store. Or you can use one of the default forms that ships with Polaris. In addition to defining the forms for entering information about an issue, you can define field values that appear in list controls such as combo boxes, list boxes, and list views. Icons can also be assigned to a field.
- **Customized Workflow** - One of the most important aspects of improving your software development process is the ability to track how issues are resolved. In order to implement this tracking mechanism, you need to create states that issues can be set to. Each state represents a step towards the resolution of a problem. You define the number of states and which users or groups are authorized to change one state to another. When a state change occurs, you define who gets notified, either by email or through a task associated with the issue. When a user is assigned to an issue, they will be notified that there is a pending issue that needs their attention.
- **Visual Studio.NET Integration** - Polaris is tightly integrated within Visual Studio.NET so that developers do not have to leave the environment in which they work to participate in the workflow process. This promotes acceptance of the process and ensures that the development team is always up-to-date on the latest issues.
- **Link Issues to Source Code** - Attach issues to files under version control so that you can trace how a problem was solved. Files can be checked in and checked out from within Polaris. Any provider, such as Razor®, that supports the Microsoft SCC Interface can be used.
- **Manage Issue-Related Tasks** - Using the task facility of Polaris, you can make sure no issue ever "falls through the cracks". Setup reminders to perform duties such as customer follow-up or scheduling meetings to discuss issue priorities.
- **User-Defined Views** - Manage large issue sets effortlessly by defining filters to limit the number of issues that are displayed. Any number of views can be created and any set of fields can be used to filter against.
- **Attach files to issues**
- **HTML-based reporting**
- **Affordable pricing... and much, much, more!**

Check In Files



Link Issues to Files Under Version Control

In order to keep your software development process under control, you need to know which source files were changed to rectify an issue. With Polaris, not only can you link an issue to specific source files under version control, but you can perform SCC provider actions such as check-in, check-out, and view file history. Polaris will work with any Microsoft SCCI-compliant provider such as Razor®, SourceSafe, or CVS. By providing these essential versioning features inside Polaris, you promote acceptance of the your software development process because now your developers can perform their tasks from one easy to use environment.

Check Out Files

For each issue, you can choose files from your SCC provider to associate with the issue. Once linked simply, click the Check Out button on the Source Files tab, and start making your changes.

Check In Files

Once the appropriate changes have been completed, click the Check In button and complete the update process. By default, Polaris will add the issue information to the check-in comment.

Polaris can be configured so that files can only be checked in if an issue has achieved an approved state. This check can be performed from [SourceSafe](#) as well as Polaris.

Show History

Determine what changes have already been made to a source file by viewing its change history.

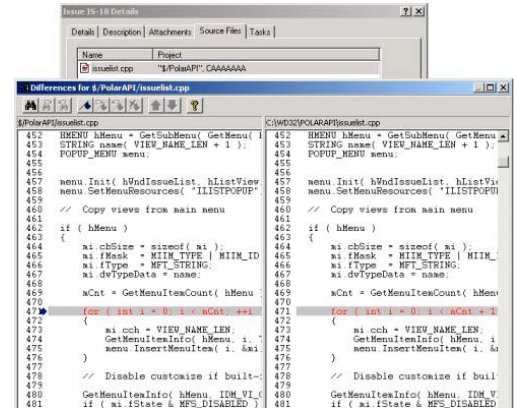
Show Differences

Use the SCC provider to show the differences between a file that is currently checked out and the version under source code control.

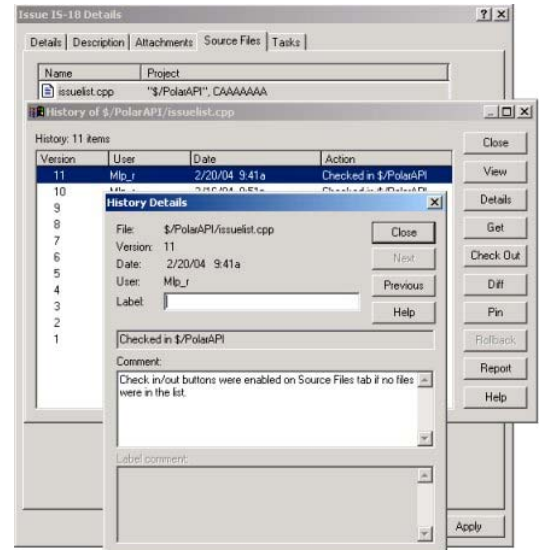
Microsoft Visual SourceSafe Addin

If you are using Visual SourceSafe as your source code control (SCC) provider, there is another level of integration between your source files and Polaris issues. If you use the Polaris Addin for SourceSafe, you can specify that source files can only be checked in if an issue has reached an approved state. Whenever a file checkin occurs, you will be prompted to select an issue or set of issues to associate with the selected source files that are being checked in.

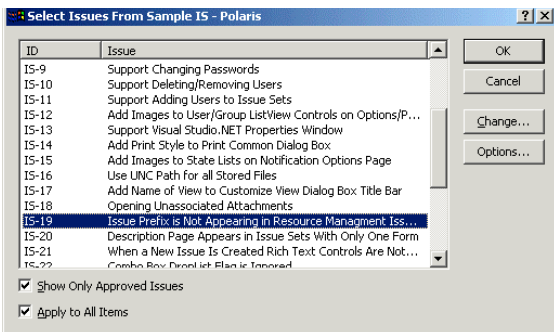
Show Differences



Show History



Microsoft Visual SourceSafe Addin



Hardware & Software Requirements - Polaris is available as a 32-bit Windows application for Windows 98/2000/XP or Windows NT 4.0 and requires a Pentium class processor, a minimum of 32MB RAM and 20MB of free disk space for each issue set created. Microsoft Data Access Components (MDAC) v2.5 or later is also required. In order to use the email facilities, a MAPI compliant mail program must be installed.